

# PureInsulite

GREEN BUILDING BLOCKS & WALL PANELS

## LIGHTER. STRONGER. GREENER.

## Building a **Greener,** Stronger Future



Sustainable Lightweight Concrete



## Why CLC Blocks?

PureInsulite CLC blocks redefine construction with lightweight, energy-efficient, and cost-saving technology. Designed for modern, sustainable buildings, our blocks help you build faster, better, and greener.



### Lightweight

Easier & faster to handle and transport, reducing labour costs.

- ✓ Faster Construction
- ✓ Reduced Structure Weight
- ✓ Strong & Durable



### Cost Savings

Achieve economies on larger scale & significant savings on smaller scale projects.

- ✓ Lower Transportation Cost
- ✓ Reduced Energy Expenses
- ✓ Minimise Structural Cost



### Eco-Friendly

Made from sustainable materials with low environmental impact.

- ✓ Recycled Raw Materials
- ✓ Lower CO<sub>2</sub> Emissions
- ✓ Thermal Efficiency

Ready to build Greener & Stronger? Contact us today for a free consultation or request a sample of PureInsulite CLC blocks!



WhatsApp Now!

**+92-301-2489422**  
**+92-332-2595072**



Sindh Small Industries  
Corporation, 99-101,  
Northern Bypass, Karachi



pureinsulite



pureinsulite.com



pureinsulite@gmail.com

**LIGHTER. STRONGER. GREENER.**

**50%**

**MORE STRONGER &  
DURABLE**

**3x**

**LIGHTER THAN  
TRADITIONAL BRICKS**

**30%**

**LESS  
CARBON FOOTPRINT**

*up to* **30%**

**ENERGY SAVINGS FROM  
THERMAL INSULATION**

## Available Sizes

### SOLID CLC BLOCKS

**24x4x8 inches  
12x4x8 inches**

**24x5x8 inches  
12x5x8 inches**

**24x6x8 inches**

**24x8x8 inches**

### INTERLOCKING CLC BLOCKS

**24x5x10 inches**

**24x6x10 inches**

## Application Areas

- ☒ Low-cost housing
- ☒ Air-conditioned building
- ☒ High-rise apartments
- ☒ Adding additional floors
- ☒ Green construction
- ☒ Waterproofing & roof insulation
- ☒ Precast exterior walls
- ☒ Acoustic construction

**Contact Us**



WhatsApp

**+92-301-2489422  
+92-332-2595072**



**[www.pureinsulite.com](http://www.pureinsulite.com)**

# PureInsulite

GREEN BUILDING BLOCKS & WALL PANELS

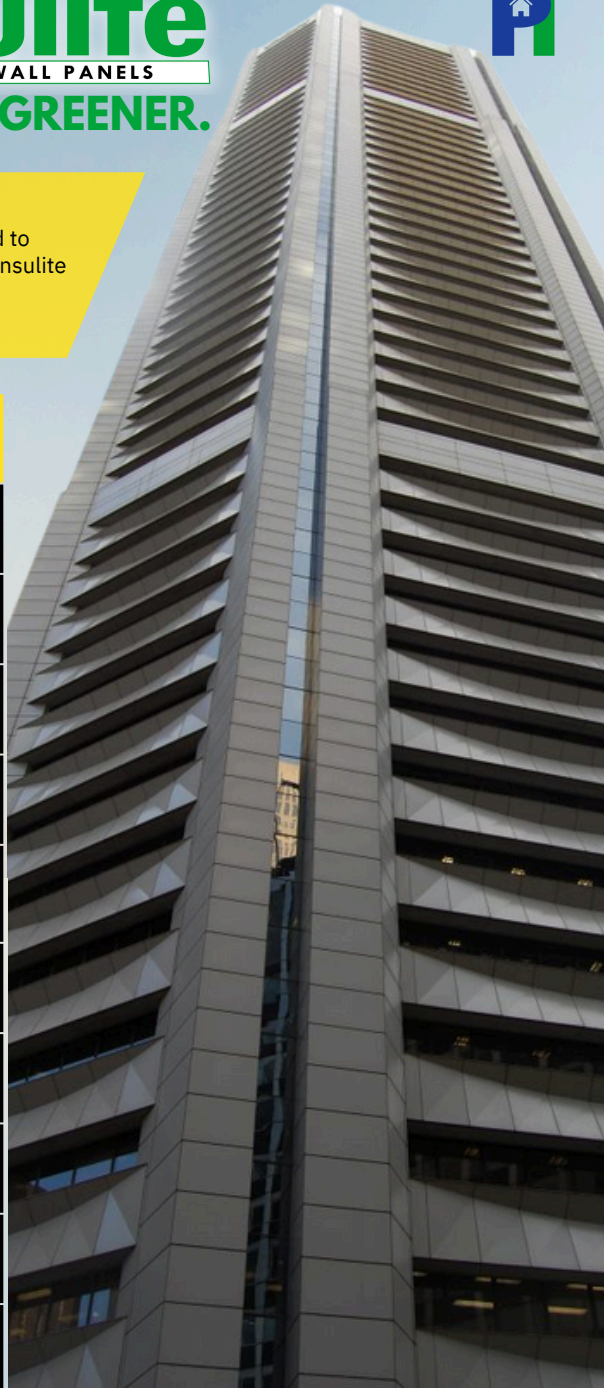
## LIGHTER. STRONGER. GREENER.



PureInsulite offers CLC blocks that deliver strong insulation and reduced carbon footprint compared to traditional construction materials. Choosing PureInsulite means investing in a durable building solution and supporting a sustainable future.

### Choose CLC

	PureInsulite CLC Blocks	Traditional Cement Blocks
Speed of Construction	15-25 m <sup>2</sup> /man/day	10-12 m <sup>2</sup> /man/day
Weight	60-75 kg/m <sup>2</sup>	145 kg/m <sup>2</sup>
Dry Density	800-1200 kg/m <sup>3</sup>	>1800 kg/m <sup>3</sup>
Water Absorption	~10%-20% (by weight)	40%
Compressive Strength	170-1000 psi (low-medium-high density)	800-1800 psi
Thickness of Mortar	6-12 mm	13-16 mm
Thermal Conductivity	0.08-0.35 W/mk	2.1 W/mk
Fire Rating	4 hours	1 hour
Acoustic Performance	>40 dB	>30 dB
Accuracy/Tolerance	±3mm	±10mm



## Contact Us



WhatsApp

+92-301-2489422  
+92-332-2595072



[www.pureinsulite.com](http://www.pureinsulite.com)